

agriRima



Protecting our plants
**SAVING
THE FUTURE**

www.agrimasprayer.com

**POWER
SPEED
CONTROL**

POWER
SPEED
CONTROL



Protecting your plants
BACKING
OUR FARMERS



ENG

Our company is a professional metal processing firm that has been operating since 1986. We specialize in processing cast iron, forged steel, steel bars, cast aluminum, and brass materials, serving a wide and flexible production network across the automotive and general machinery industries.

Since 2015, under the Agrima brand, we have expanded our expertise to manufacture gearboxes, diaphragm pumps, and control systems used in agricultural machinery.

ES

Somos una empresa profesional de procesamiento de metales que opera desde 1986. Nos especializamos en el procesamiento de hierro fundido, acero forjado, barras de acero, aluminio fundido y materiales de latón. Disponemos de una red de producción amplia y flexible en las industrias automotriz y de maquinaria general.

Desde 2015, bajo la marca Agrima, ampliamos nuestra experiencia para fabricar multiplicadores, bombas de diafragma y sistemas de control para maquinaria agrícola.



Excellence- Driven **Production,** **Quality** and **R&D.**



CMM - Quality



R & D

PUMPS BOMBAS

**Unleash the power,
trust the quality.**

ENG

Agrima Pumps – Precision, Power and Performance

Agrima pumps are built with top-quality craftsmanship and undergo rigorous testing to ensure maximum reliability in the field. Available in multiple series with flow rates from 78 to 250 L/min and pressures up to 50 bar, they deliver powerful, consistent performance for a wide range of agricultural and industrial applications. From orchards and vineyards to open fields,

Agrima pumps are ideal for high-pressure spraying. Beyond agriculture, they are also effective in firefighting and pest control operations. Designed to be driven by tractor PTOs, electric motors, or hydraulic systems, these pumps offer versatile integration and long-lasting durability-keeping farmers and professionals equipped for every challenge.



Libera el poder, confía en la calidad.

ES

Bombas Agrima: precisión, potencia y rendimiento

Fabricadas con la máxima calidad artesanal, las bombas Agrima se someten a rigurosas pruebas para garantizar la máxima fiabilidad en el campo. Con caudales que van de 78 a 250 l/min y presiones de hasta 50 bar, están disponibles en múltiples series y ofrecen un rendimiento potente y constante para una amplia gama de aplicaciones agrícolas e industriales. Ideales para la pulverización a alta presión, las bombas Agrima son perfectas para

huertos, viñedos y campos abiertos. También son eficaces en operaciones de extinción de incendios y control de plagas más allá de la agricultura. Diseñadas para ser accionadas por tomas de fuerza de tractores, motores eléctricos o sistemas hidráulicos, estas bombas ofrecen una integración versátil y una gran durabilidad, lo que permite a los agricultores y profesionales estar equipados para cualquier desafío.

HPP120 C/C



ENG

Agrima's 3-diaphragm manifold pump delivers a flow rate of 120 L/min at a maximum pressure of 50 bar. Equipped with a double spline shaft, it offers flexible drive options and ensures smooth, efficient power transmission.

The pump body is made of anodized aluminum, providing excellent resistance to corrosion and aggressive chemicals. Manifolds are available in both aluminum and brass, offering durability and adaptability for different operating conditions.

Engineered for strength, precision, and reliability, Agrima pumps guarantee long-lasting performance in every field application.

ES

La bomba de colector de 3 diafragmas de Agrima ofrece un caudal de 120 L/min a una presión máxima de 50 bar. Equipada con un eje de doble estría, ofrece opciones de transmisión flexibles y garantiza una transmisión de potencia suave y eficiente.

El chasis de la bomba está fabricado en aluminio anodizado, lo que le confiere una excelente resistencia a la corrosión y a los productos químicos agresivos. Los colectores están disponibles en aluminio y latón, lo que ofrece durabilidad y adaptabilidad a diferentes condiciones de funcionamiento.

Diseñadas para ofrecer resistencia, precisión y fiabilidad, las bombas Agrima garantizan un rendimiento duradero en todas las aplicaciones de campo.

Technical Details

Code	Flow Rate	Diaphragms	Pressure	RPM	Weight	Power (kW)
HPP120 C/C	120 ltr/min	3	50 Bar	550 RPM	37 Kg	12

HPP150 C/C



ENG

Agrima's 3-diaphragm manifold pump delivers a flow rate of 150 L/min at a maximum pressure of 50 bar. Equipped with a double spline shaft, it offers flexible drive options and ensures smooth, efficient power transmission.

The pump body is made of anodized aluminum, providing excellent resistance to corrosion and aggressive chemicals. Manifolds are available in both aluminum and brass, offering durability and adaptability for different operating conditions.

Engineered for strength, precision, and reliability, Agrima pumps guarantee long-lasting performance in every field application.

ES

La bomba de colector de 3 diafragmas de Agrima ofrece un caudal de 150 L/min a una presión máxima de 50 bar. Equipada con un eje de doble estría, ofrece opciones de transmisión flexibles y garantiza una transmisión de potencia suave y eficiente.

El chasis de la bomba está fabricado en aluminio anodizado, lo que le confiere una excelente resistencia a la corrosión y a los productos químicos agresivos. Los colectores están disponibles en aluminio y latón, lo que ofrece durabilidad y adaptabilidad a diferentes condiciones de funcionamiento.

Diseñadas para ofrecer resistencia, precisión y fiabilidad, las bombas Agrima garantizan un rendimiento duradero en todas las aplicaciones de campo.

Technical Details

Code	Flow Rate	Diaphragms	Pressure	RPM	Weight	Power (kW)
HPP150 C/C	150 ltr/min	3	50 Bar	550 RPM	37 Kg	12

HPP180 C/C



ENG

Agrima's 4-diaphragm manifold pump delivers a flow rate of 180 L/min at a maximum pressure of 50 bar. Equipped with a double spline shaft, it offers flexible drive options and ensures smooth, efficient power transmission.

The pump body is made of anodized aluminum, providing excellent resistance to corrosion and aggressive chemicals. Manifolds are available in both aluminum and brass, offering durability and adaptability for different operating conditions.

Engineered for strength, precision, and reliability, Agrima pumps guarantee long-lasting performance in every field application.

ES

La bomba de colector de 4 diafragmas de Agrima ofrece un caudal de 180 L/min a una presión máxima de 50 bar. Equipada con un eje de doble estría, ofrece opciones de transmisión flexibles y garantiza una transmisión de potencia suave y eficiente.

El chasis de la bomba está fabricado en aluminio anodizado, lo que le confiere una excelente resistencia a la corrosión y a los productos químicos agresivos. Los colectores están disponibles en aluminio y latón, lo que ofrece durabilidad y adaptabilidad a diferentes condiciones de funcionamiento.

Diseñadas para ofrecer resistencia, precisión y fiabilidad, las bombas Agrima garantizan un rendimiento duradero en todas las aplicaciones de campo.

Technical Details

Code	Flow Rate	Diaphragms	Pressure	RPM	Weight	Power (kW)
HPP180 C/C	180 ltr/min	4	50 Bar	550 RPM	43.6 Kg	12

HPP200 C/C



ENG

Agrima's 4-diaphragm manifold pump delivers a flow rate of 200 L/min at a maximum pressure of 50 bar. Equipped with a double spline shaft, it offers flexible drive options and ensures smooth, efficient power transmission.

The pump body is made of anodized aluminum, providing excellent resistance to corrosion and aggressive chemicals. Manifolds are available in both aluminum and brass, offering durability and adaptability for different operating conditions.

Engineered for strength, precision, and reliability, Agrima pumps guarantee long-lasting performance in every field application.

ES

La bomba de colector de 4 diafragmas de Agrima ofrece un caudal de 200 L/min a una presión máxima de 50 bar. Equipada con un eje de doble estría, ofrece opciones de transmisión flexibles y garantiza una transmisión de potencia suave y eficiente.

El chasis de la bomba está fabricado en aluminio anodizado, lo que le confiere una excelente resistencia a la corrosión y a los productos químicos agresivos. Los colectores están disponibles en aluminio y latón, lo que ofrece durabilidad y adaptabilidad a diferentes condiciones de funcionamiento.

Diseñadas para ofrecer resistencia, precisión y fiabilidad, las bombas Agrima garantizan un rendimiento duradero en todas las aplicaciones de campo.

Technical Details

Code	Flow Rate	Diaphragms	Pressure	RPM	Weight	Power (kW)
HPP200 C/C	200 ltr/min	4	50 Bar	550 RPM	43.6 Kg	16.2

HPP220 C/C



ENG

Agrima's 5-diaphragm manifold pump delivers a flow rate of 220 L/min at a maximum pressure of 50 bar. Equipped with a double spline shaft, it offers flexible drive options and ensures smooth, efficient power transmission.

The pump body is made of anodized aluminum, providing excellent resistance to corrosion and aggressive chemicals. Manifolds are available in both aluminum and brass, offering durability and adaptability for different operating conditions.

Engineered for strength, precision, and reliability, Agrima pumps guarantee long-lasting performance in every field application.

ES

La bomba de colector de 5 diafragmas de Agrima ofrece un caudal de 220 L/min a una presión máxima de 50 bar. Equipada con un eje de doble estría, ofrece opciones de transmisión flexibles y garantiza una transmisión de potencia suave y eficiente.

El chasis de la bomba está fabricado en aluminio anodizado, lo que le confiere una excelente resistencia a la corrosión y a los productos químicos agresivos. Los colectores están disponibles en aluminio y latón, lo que ofrece durabilidad y adaptabilidad a diferentes condiciones de funcionamiento.

Diseñadas para ofrecer resistencia, precisión y fiabilidad, las bombas Agrima garantizan un rendimiento duradero en todas las aplicaciones de campo.

Technical Details

Code	Flow Rate	Diaphragms	Pressure	RPM	Weight	Power (kW)
HPP220 C/C	220 ltr/min	5	50 Bar	550 RPM	50.2 Kg	19.1

HPP250 C/C



ENG

Agrima's 5-diaphragm manifold pump delivers a flow rate of 250 L/min at a maximum pressure of 50 bar. Equipped with a double spline shaft, it offers flexible drive options and ensures smooth, efficient power transmission.

The pump body is made of anodized aluminum, providing excellent resistance to corrosion and aggressive chemicals. Manifolds are available in both aluminum and brass, offering durability and adaptability for different operating conditions.

Engineered for strength, precision, and reliability, Agrima pumps guarantee long-lasting performance in every field application.

ES

La bomba de colector de 5 diafragmas de Agrima ofrece un caudal de 250 L/min a una presión máxima de 50 bar. Equipada con un eje de doble estría, ofrece opciones de transmisión flexibles y garantiza una transmisión de potencia suave y eficiente.

El chasis de la bomba está fabricado en aluminio anodizado, lo que le confiere una excelente resistencia a la corrosión y a los productos químicos agresivos. Los colectores están disponibles en aluminio y latón, lo que ofrece durabilidad y adaptabilidad a diferentes condiciones de funcionamiento.

Diseñadas para ofrecer resistencia, precisión y fiabilidad, las bombas Agrima garantizan un rendimiento duradero en todas las aplicaciones de campo.

Technical Details

Code	Flow Rate	Diaphragms	Pressure	RPM	Weight	Power (kW)
HPP250 C/C	250 ltr/min	5	50 Bar	550 RPM	50.6 Kg	19.8

GEARBOXES

MULTIPLICADOR



MEDOP
911790
10
4131



Uninterrupted performance, maximum efficiency.

ENG

Agrima produces a range of gearboxes with different transmission options, engineered specifically for the agricultural spraying sector. Built to deliver reliability, strength, and long-term durability, our gearboxes ensure efficient power transfer in tough working conditions.

We also offer customized solutions to meet the unique needs of our clients-providing the right gearbox for every machine and every challenge in the field.

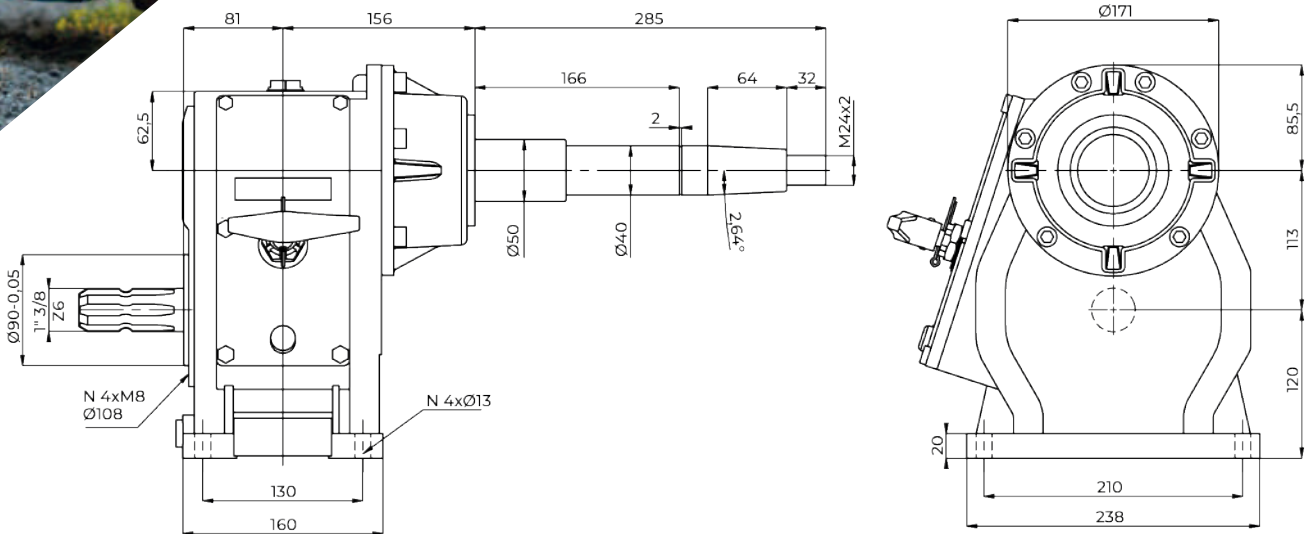
Rendimiento ininterrumpido, máxima eficiencia.

ES

Agrima fabrica una gama de cajas de cambios con diferentes opciones de transmisión, diseñadas específicamente para el sector de la pulverización agrícola. Fabricadas para ofrecer fiabilidad, resistencia y durabilidad a largo plazo, nuestras cajas de cambios garantizan una transferencia de potencia eficiente en condiciones de trabajo difíciles.

También ofrecemos soluciones personalizadas para satisfacer las necesidades específicas de nuestros clientes, proporcionando la caja de cambios adecuada para cada máquina y cada reto en el campo.

F86

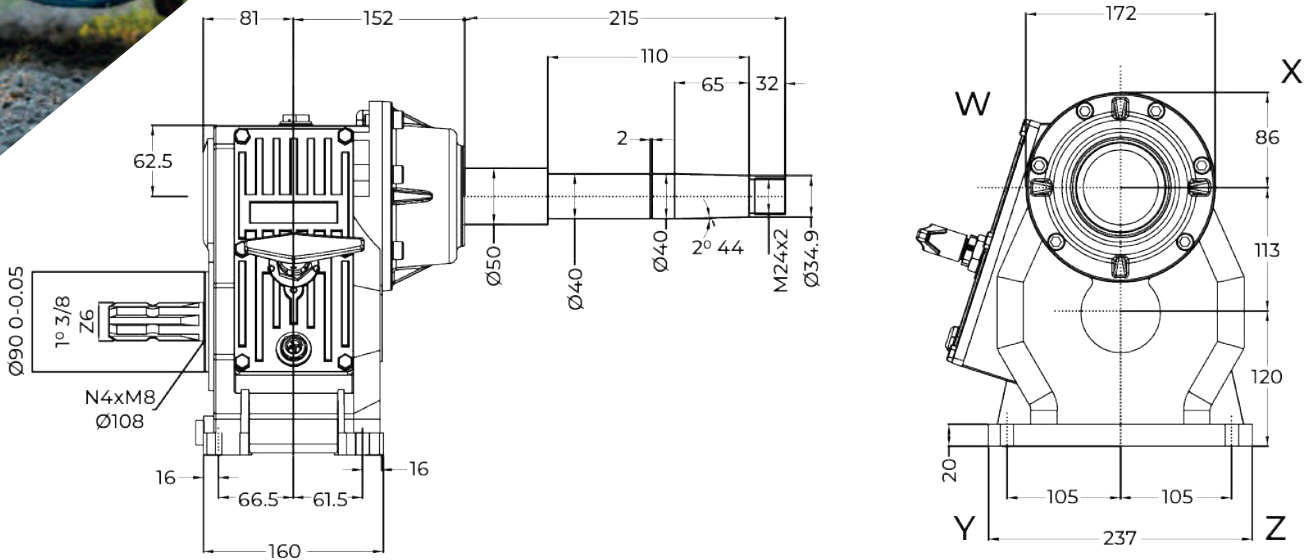


OVERDRAW GEARS	GEAR RATIO	INPUT REV gri/min-rpm	INPUT POWER		OUTPUT REV gri/min-rpm	CODE	WEIGHT
			CV	kW			
	1:3.61	540	55	40.5	1949.4	F86	31 Kg
	1:4.53	540	55	40.5	2446.2	BEARINGS	W 6303 Y 6307 X 6310 Z 6207

MATERIALS	SHAFTS	GEARS	BOX	TOOTHING	
	20MnCr5	16CrNi4	Cs400	C.T.R HELICOIDAL AND SHAVED TOOTH	

Gear ratio and output shaft length can be modified to fit customers' needs.

F85

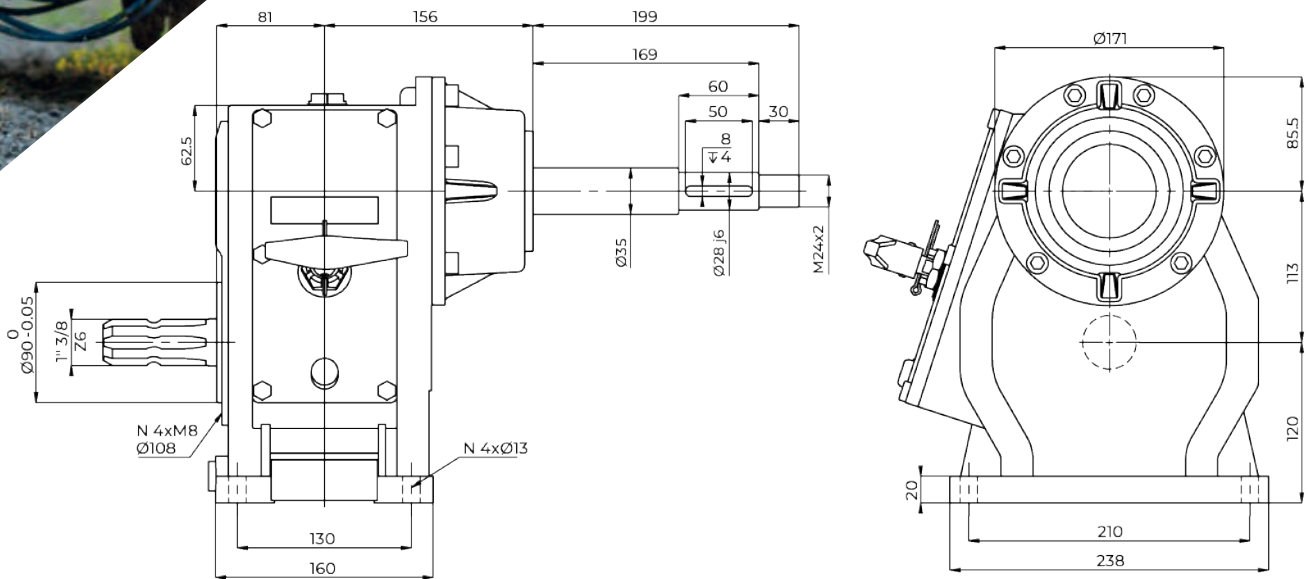


OVERDRAW GEARS	GEAR RATIO	INPUT REV gri/min-rpm	INPUT POWER		OUTPUT REV gri/min-rpm	CODE	WEIGHT
			CV	kW			
	1:3.61	540	30	40.5	1949.4	F85	31 Kg
	1:4.53	540	30	40.5	2446.2	BEARINGS	W 6303 Y 6307 X 6310 Z 6207

MATERIALS	SHAFTS	GEARS	BOX	TOOTHING	
	20MnCr5	16CrNi4	Cs400	C.T.R HELICOIDAL AND SHAVED TOOTH	

Gear ratio and output shaft length can be modified to fit customers' needs.

F83

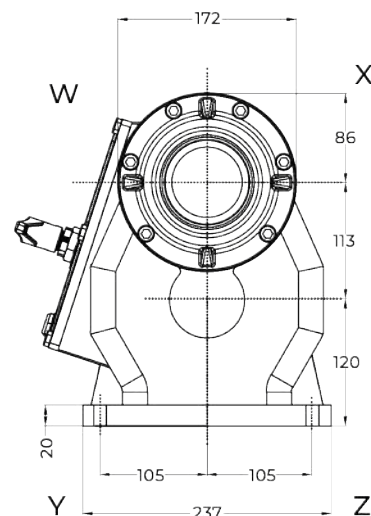
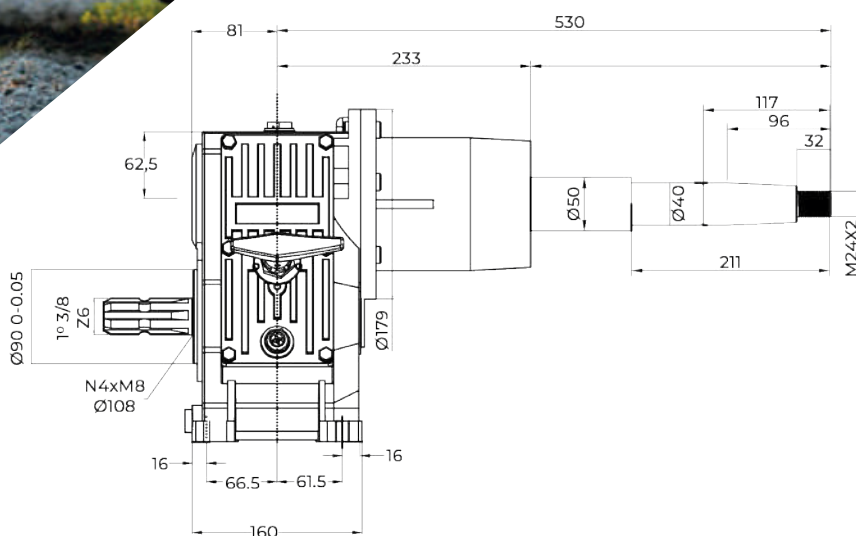


OVERDRAW GEARS	GEAR RATIO	INPUT REV gri/min-rpm	INPUT POWER		OUTPUT REV gri/min-rpm	CODE	WEIGHT
			CV	kW			
	1:3.61	540	55	40.5	1949.4	F83	31 Kg
	1:4.53	540	55	40.5	2446.2	BEARINGS	W 6303 Y 6307 X 6310 Z 6307

MATERIALS	SHAFTS	GEARS	BOX	TOOTHING	
	20MnCr5	16CrNi4	Cs400	C.T.R HELICOIDAL AND SHAVED TOOTH	

Gear ratio and output shaft length can be modified to fit customers' needs.

F82

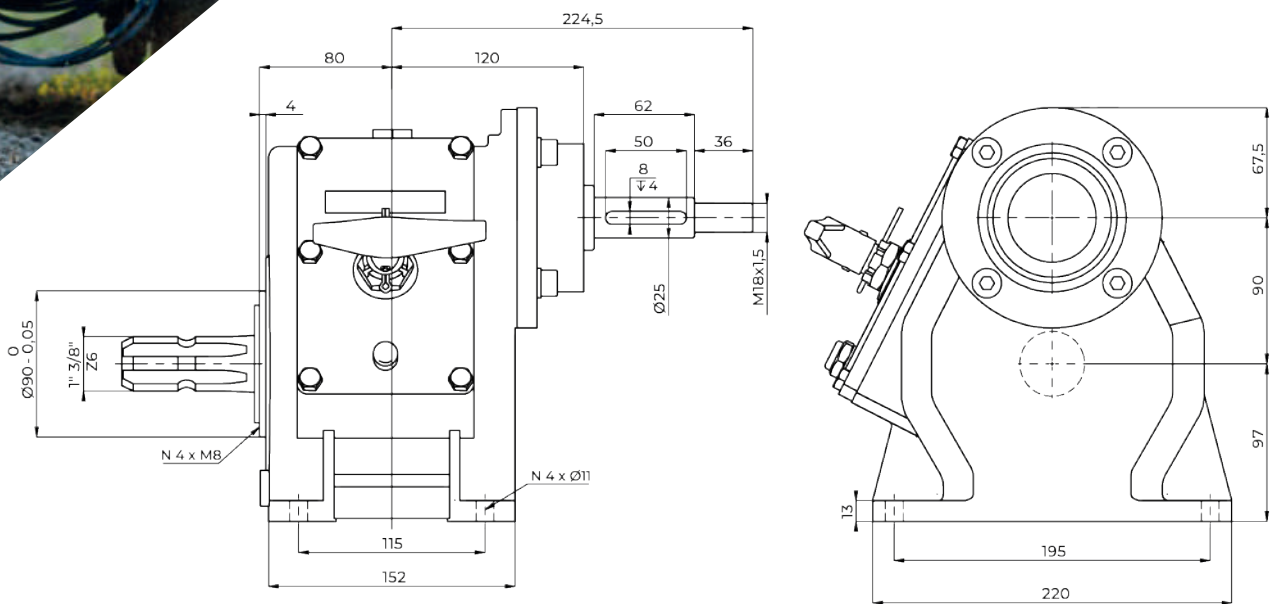
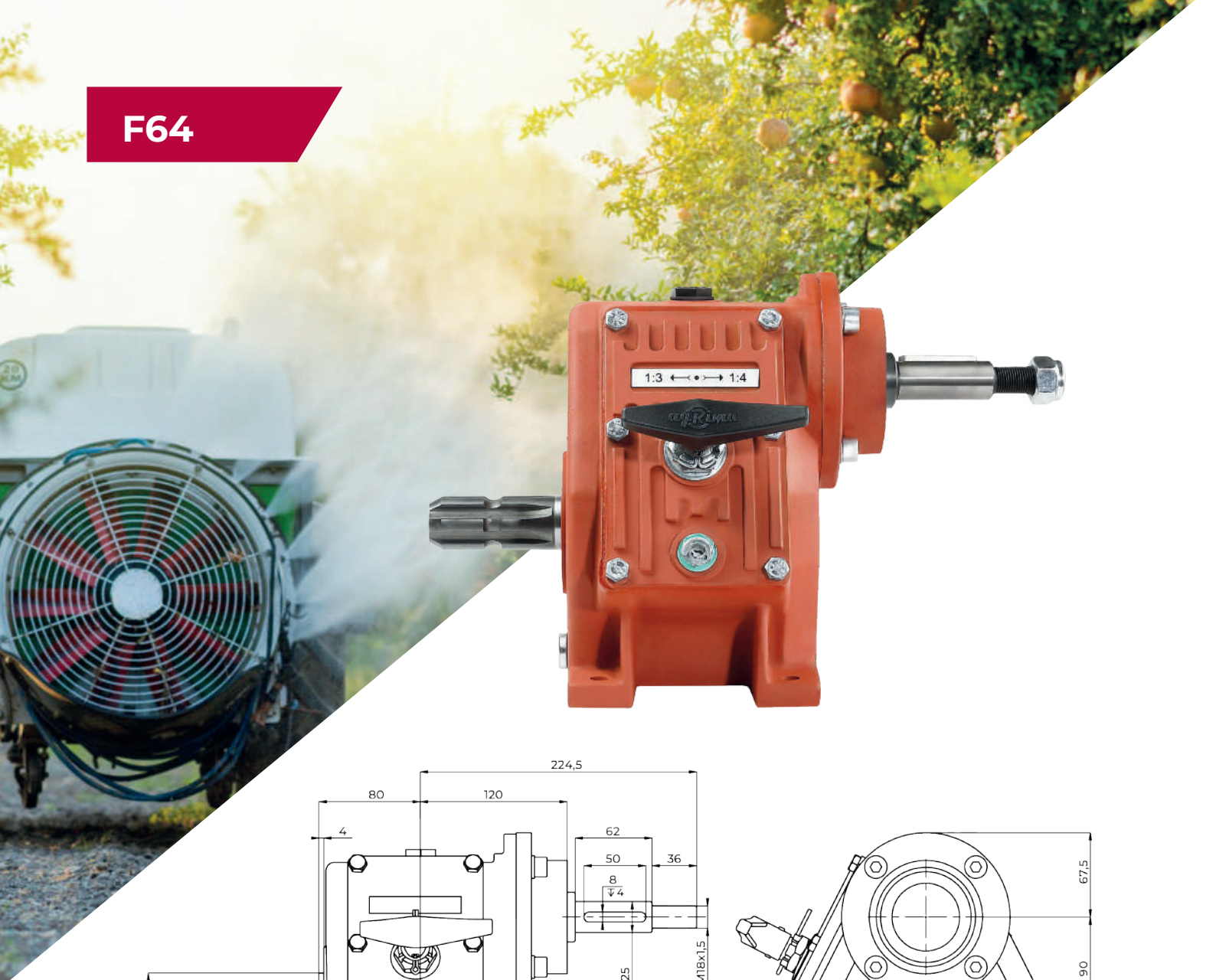


OVERDRAW GEARS	GEAR RATIO	INPUT REV gri/min-rpm	INPUT POWER		OUTPUT REV gri/min-rpm	CODE	WEIGHT
			CV	kW			
	1:3.61	540	55	40.5	1949.4	F82	41 Kg
	1:4.53	540	55	40.5	2446.2	BEARINGS	W 6305 Y 6207 X 6208 Z 6207

MATERIALS	SHAFTS	GEARS	BOX	TOOTHING	
	20MnCr5	16CrNi4	Cs400	C.T.R HELICOIDAL AND SHAVED TOOTH	

Gear ratio and output shaft length can be modified to fit customers' needs.

F64

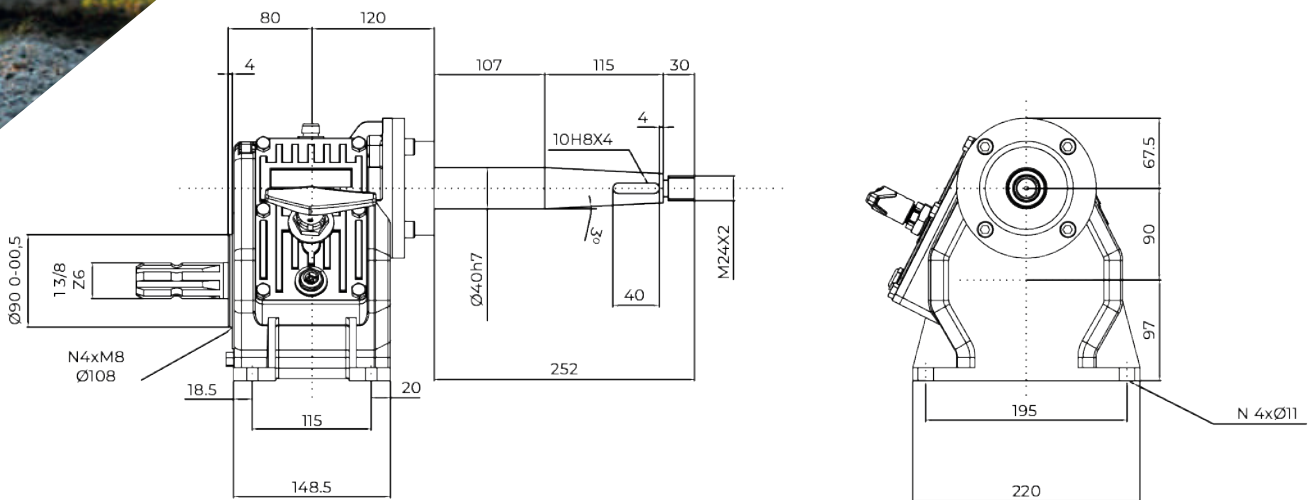


OVERDRAW GEARS	GEAR RATIO	INPUT REV gri/min-rpm	INPUT POWER		OUTPUT REV gri/min-rpm	CODE	WEIGHT
			CV	kW			
	1:3.69	540	30	22.1	1960.2	F64	25 Kg
	1:4.8	540	30	22.1	2592	BEARINGS	W 6305 Y 6207 X 6208 Z 6207

MATERIALS	SHAFTS	GEARS	BOX	TOOTHING	
	20MnCr5	16CrNi4	Cs400	C.T.R HELICOIDAL AND SHAVED TOOTH	

Gear ratio and output shaft length can be modified to fit customers' needs.

F63

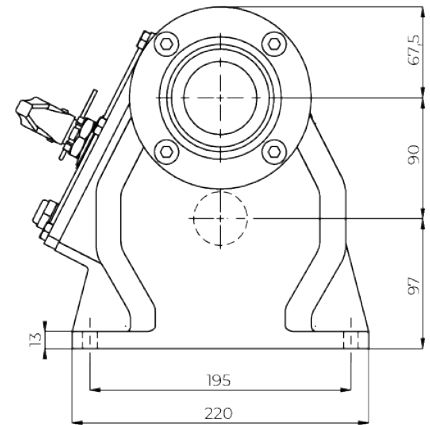
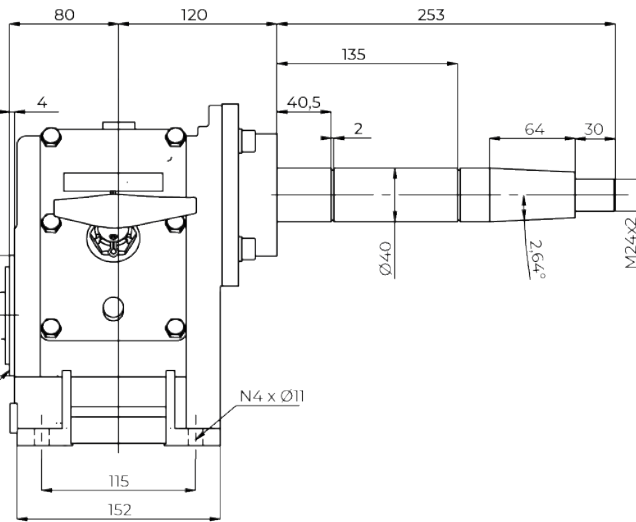


OVERDRAW GEARS	GEAR RATIO	INPUT REV gri/min-rpm	INPUT POWER		OUTPUT REV gri/min-rpm	CODE	WEIGHT
			CV	kW			
	1:4	540	30	22.1	1960.2	F63	25 Kg
	1:5	540	30	22.1	2592	BEARINGS	W 6305 Y 6207 X 6208 Z 6207

MATERIALS	SHAFTS	GEARS	BOX	TOOTHING	
	20MnCr5	16CrNi4	Cs400	C.T.R HELICOIDAL AND SHAVED TOOTH	

Gear ratio and output shaft length can be modified to fit customers' needs.

F62

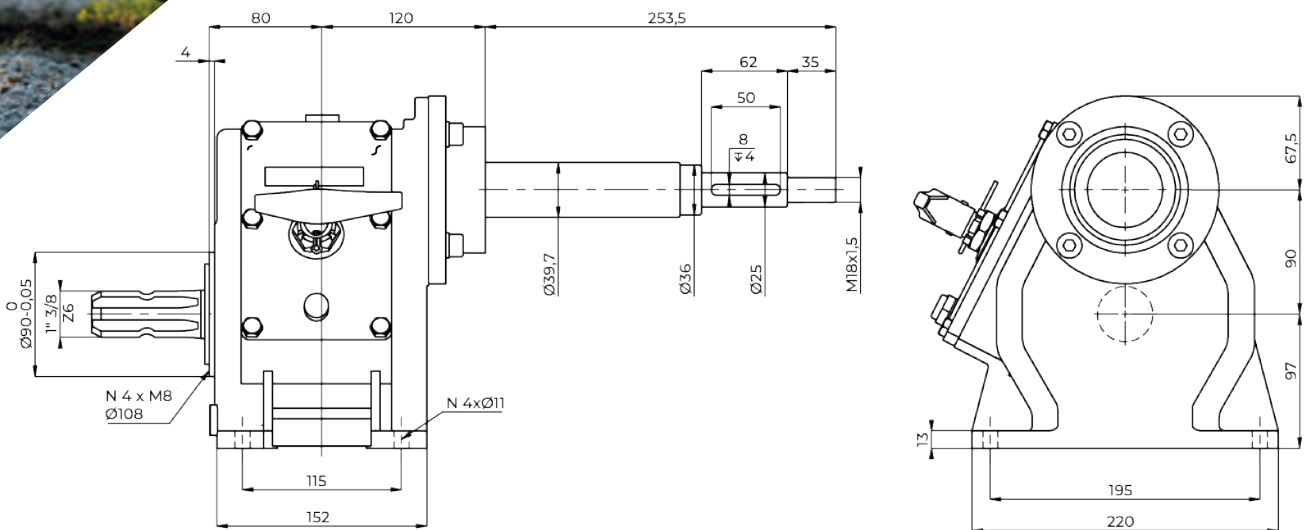


OVERDRAW GEARS	GEAR RATIO	INPUT REV gri/min-rpm	INPUT POWER		OUTPUT REV gri/min-rpm	CODE	WEIGHT
			CV	kW			
	1:3.63	540	30	22.1	1960.2	F62	25 Kg
	1:4.8	540	30	22.1	2592	BEARINGS	W 6305 Y 6207 X 6208 Z 6207

MATERIALS	SHAFTS	GEARS	BOX	TOOTHING	
	20MnCr5	16CrNi4	Cs400	C.T.R HELICOIDAL AND SHAVED TOOTH	

Gear ratio and output shaft length can be modified to fit customers' needs.

F61

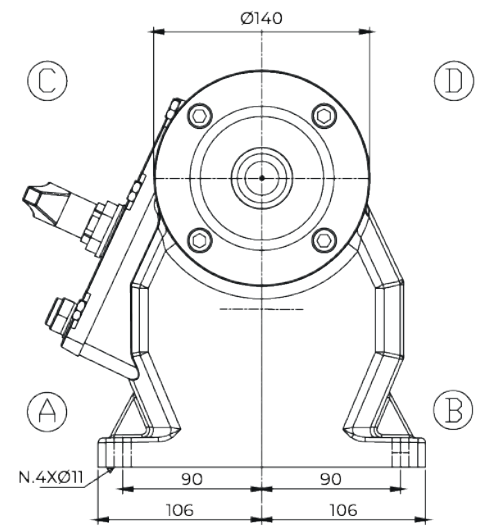
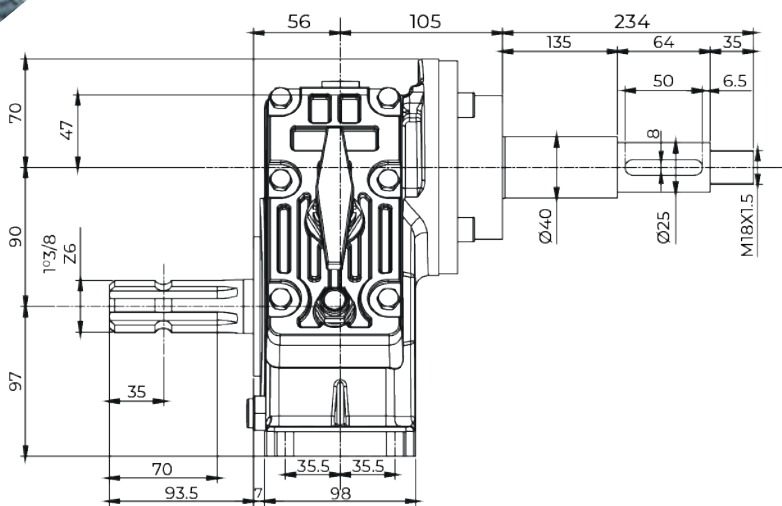


OVERDRAW GEARS	GEAR RATIO	INPUT REV gri/min-rpm	INPUT POWER		OUTPUT REV gri/min-rpm	CODE	WEIGHT
			CV	kW			
	1:3.63	540	30	22.1	1960.2	F61	25 Kg
	1:4.8	540	30	22.1	2592	BEARINGS	W 6305 Y 6207 X 6208 Z 6207

MATERIALS	SHAFTS	GEARS	BOX	TOOTHING	
	20MnCr5	16CrNi4	Cs400	C.T.R HELICOIDAL AND SHAVED TOOTH	

Gear ratio and output shaft length can be modified to fit customers' needs.

F45

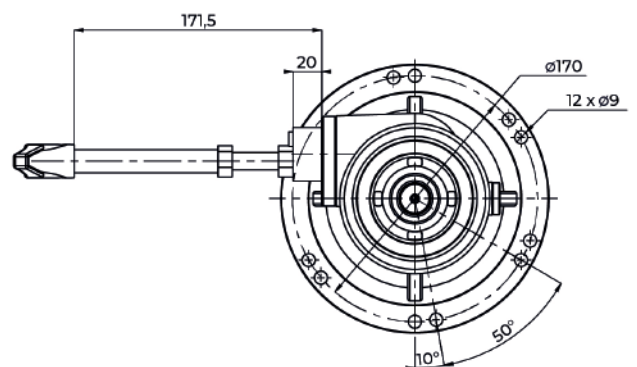
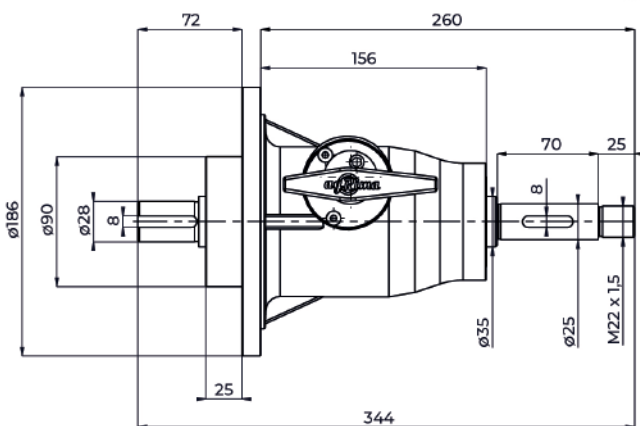


OVERDRAW GEARS	GEAR RATIO	INPUT REV gri/min-rpm	INPUT POWER		OUTPUT REV gri/min-rpm	CODE	WEIGHT
			CV	kw			
	1:5.25	540	28	20.6	2835	F45	20 Kg

MATERIALS	SHAFTS	GEARS	BOX	OIL	TOOTHING	
	16MnCr5+H	21NiCrMo2	GGG40	SAE90	C.T.R HELICOIDAL AND SHAVED TOOTH	

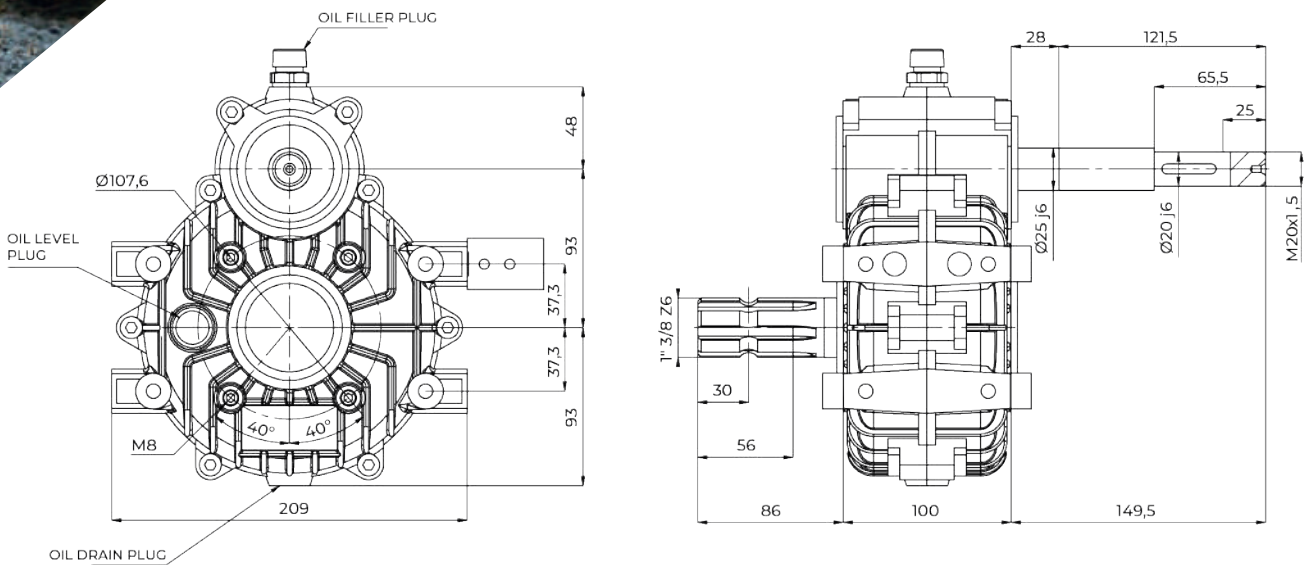
Gear ratio and output shaft length can be modified to fit customers' needs.

F40



Gear ratio and output shaft length can be modified to fit customers' needs.

F44

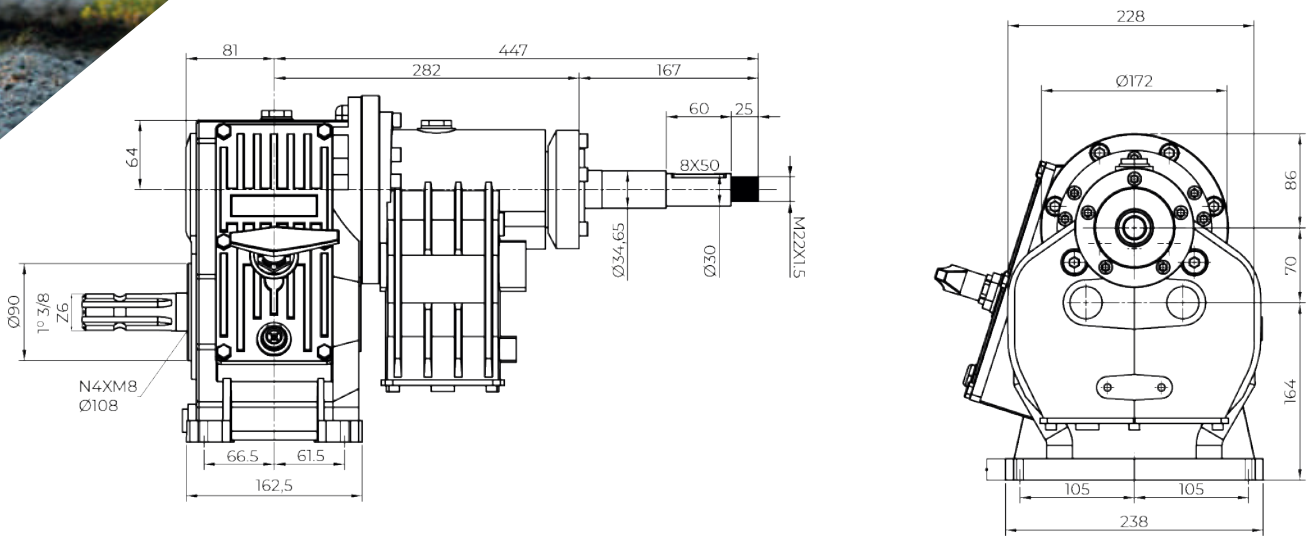


OVERDRAW GEARS	GEAR RATIO	INPUT REV gri/min-rpm	INPUT POWER		OUTPUT REV gri/min-rpm	CODE	WEIGHT
			CV	kW			
	1:4.6	550	19	13.9	2530	F44	7.8 Kg

MATERIALS	SHAFTS	GEARS	BOX	TOOTHING
	16MnCr5	16MnCr5	AlSi9Cu3	C.T.R HELICOIDAL AND SHAVED TOOTH

Gear ratio and output shaft length can be modified to fit customers' needs.

D80



OVERDRAW GEARS	GEAR RATIO	INPUT REV gri/min-rpm	INPUT POWER		OUTPUT REV gri/min-rpm	CODE	WEIGHT
			CV	kW			
	1:3.61	540	60	43.5	1949.4	D80	55 Kg
	1:4.53	540	61	44.8	2446.2		

MATERIALS	SHAFTS	GEARS	BOX	TOOTHING	
	16MnCr5+H	21NiCrMo2	GGG40	C.T.R HELICOIDAL AND SHAVED TOOTH	

Gear ratio and output shaft length can be modified to fit customers' needs.

A detailed view of an Agrima control unit, a mechanical device used for regulating pressure and flow in orchard sprayers. It features a black plastic top cap, a brass body with various ports, and a black pressure gauge with a white face and red, yellow, and green scales. The gauge is mounted on the side of the unit. The background is a dark, textured grey.

CONTROL UNITS

MANDO DE PRESIÓN

**Feel the power,
take control.**

ENG

Designed for use in orchard sprayers, Agrima control units combine strength and precision for efficient pressure and flow regulation. Manufactured with a half brass, half aluminum body, they offer both durability and corrosion resistance.

With a flow capacity of up to 200 L/min and a maximum pressure of 50 bar, these units ensure reliable performance even under intensive spraying conditions.

**Siente el poder,
toma el control.**

ES

Diseñadas para su uso en pulverizadores para huertos, las unidades de control Agrima combinan resistencia y precisión para una regulación eficiente de la presión y el caudal. Fabricadas con un cuerpo mitad latón y mitad aluminio, ofrecen durabilidad y resistencia a la corrosión.

Con una capacidad de caudal de hasta 200 l/min y una presión máxima de 50 bar, estas unidades garantizan un rendimiento fiable incluso en condiciones de pulverización intensiva.

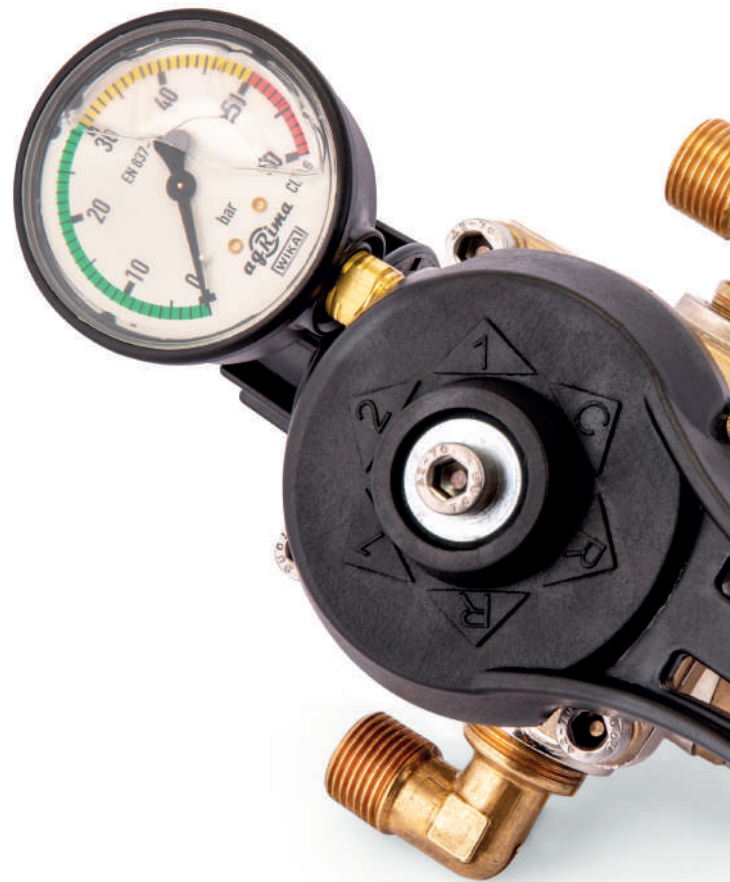
AGR200BR



Technical Details

Flow Rate	Pressure	Weight
200 ltr/min	50 Bar	3 Kg

AGR200AL



Technical Details

Flow Rate	Pressure	Weight
200 ltr/min	50 Bar	3 Kg

FANS

GRUPOS DE AIRE



Protecting our plants, saving the future.

ENG

Explore our wide range of spraying fans, designed for efficient use in orchards, vineyards, and many other applications. Each model can be customized to perfectly suit your specific needs. Our dedicated team at Agrima Sprayer is here to provide exceptional support and guidance, helping you find the ideal solution. We take pride in our fast production process and commitment to quality, ensuring you receive the best products available. Partner with us for reliable spraying solutions backed by expert assistance!

Protegiendo nuestras plantas, salvando el futuro.

ES

Explora nuestra amplia gama de ventiladores de pulverización, diseñados para un uso eficiente en huertos, viñas y muchas otras aplicaciones. Cada modelo puede personalizarse para adaptarse perfectamente a tus necesidades específicas. Nuestro equipo dedicado en Agrima Sprayer está aquí para brindarte un apoyo y orientación excepcionales, ayudándote a encontrar la solución ideal. Nos enorgullece nuestro proceso de producción rápida y nuestro compromiso con la calidad, asegurándonos de que recibas los mejores productos disponibles. Contáctanos para soluciones de pulverización confiables respaldadas por una excelente atención al cliente!

AGR900G



ENG

The propeller can be equipped with or without clutch.



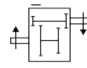

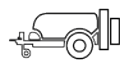

The fan unit can be made from 3 different materials: Galvanized material, coated material or stainless steel material.

ES

La hélice puede estar equipada con o sin embrague.

La unidad del ventilador puede estar hecha de 3 materiales diferentes: material galvanizado, material revestido o material de acero inoxidable.

Technical Details

Code	 Size	 Blades		 HP	 Lt	 No. of nozzle
AGR900G	900mm	10	2+N	≥ 50	≥ 1000	8+8

AGR900G-1



ENG

The propeller can be equipped with or without clutch.

Equipped with separators in between nozzles.

The fan unit can be made from 3 different materials: zvanized material, coated material or stainless steel material.



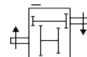



ES

La hélice puede estar equipada con o sin embrague.

Equipado con separadores entre boquillas.

La unidad del ventilador puede estar hecha de 3 materiales diferentes: material galvanizado, material revestido o material de acero inoxidable.

Technical Details

Code	 Size	 Blades		 HP	 Lt	 No. of nozzle
AGR900G-1	900mm	10	2+N	≥ 50	≥ 1000	8+8

AGR900D



ENG

The propeller can be equipped with or without clutch.



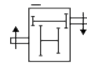

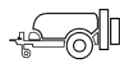

The fan unit can be made from 3 different materials: Galvanized material, coated material or stainless steel material.

ES

La hélice puede estar equipada con o sin embrague.

La unidad del ventilador puede estar hecha de 3 materiales diferentes: material galvanizado, material revestido o material de acero inoxidable.

Technical Details

Code	 Size	 Double		 HP	 Lt	 No. of nozzle
AGR900D	900mm	10	2+N	≥ 50	≥ 1000	8+8

AGR900W



ENG

The propeller can be equipped with or without clutch.

Angular air vent.

The fan unit can be made from 3 different materials: Galvanized material, coated material or stainless steel material.



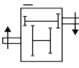



ES

La hélice puede estar equipada con o sin embrague.

Ventilación de aire angular.

La unidad del ventilador puede estar hecha de 3 materiales diferentes: material galvanizado, material revestido o material de acero inoxidable.

Technical Details

Code	 Size	 Double		 HP	 Lt	 No. of nozzle
AGR900W	900mm	10	2+N	≥ 50	≥ 1000	8+8

AGR900W-1



ENG

The propeller can be equipped with or without clutch.

Angular air vent.

The fan unit can be made from 3 different materials: Galvanized material, coated material or stainless steel material.



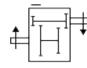

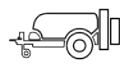

ES

La hélice puede estar equipada con o sin embrague.

Ventilación de aire angular.

La unidad del ventilador puede estar hecha de 3 materiales diferentes: material galvanizado, material revestido o material de acero inoxidable.

Technical Details

Code	 Size	 Double		 HP	 Lt	 No. of nozzle
AGR900W-1	900mm	10	2+N	≥ 50	≥ 1000	8+8

AGR900R



ENG

The reverse propeller can be equipped with or without clutch.



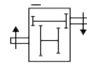

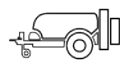

The fan unit can be made from 3 different materials: Galvanized material, coated material or stainless steel material.

ES

La hélice inversa puede estar equipada con o sin embrague.

La unidad del ventilador puede estar hecha de 3 materiales diferentes: material galvanizado, material revestido o material de acero inoxidable.

Technical Details

Code	 Size	 Blades		 HP	 Lt	 No. of nozzle
AGR900R	900mm	10	2+N	≥ 50	≥ 1000	8+8

AGR850G



ENG

The propeller can be equipped with or without clutch.



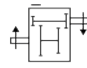

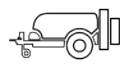

The fan unit can be made from 3 different materials: Galvanized material, coated material or stainless steel material.

ES

La hélice puede estar equipada con o sin embrague.

La unidad del ventilador puede estar hecha de 3 materiales diferentes: material galvanizado, material revestido o material de acero inoxidable.

Technical Details

Code	 Size	 Blades		 HP	 Lt	 No. of nozzle
AGR850G	850mm	10	2+N	≥ 50	≥ 1000	7+7

AGR750G



ENG

The propeller can be equipped with or without clutch.



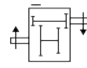

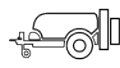

The fan unit can be made from 3 different materials: Galvanized material, coated material or stainless steel material.

ES

La hélice puede estar equipada con o sin embrague.

La unidad del ventilador puede estar hecha de 3 materiales diferentes: material galvanizado, material revestido o material de acero inoxidable.

Technical Details

Code	 Size	 Blades		 HP	 Lt	 No. of nozzle
AGR750G	750mm	8	2+N	≥ 50	≥ 1000	6+6

AGR750G-A



ENG

Fan is equipped with one speed gearbox.





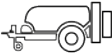

The fan unit can be made from 3 different materials: Galvanized material, coated material or stainless steel material.

ES

El ventilador está equipado con una caja de cambios de una velocidad.

La unidad del ventilador puede estar hecha de 3 materiales diferentes: material galvanizado, material revestido o material de acero inoxidable.

Technical Details

Code	 Size	 Blades	 1+N	 HP	 Lt	 No. of nozzle
AGR750G-A	750mm	8	1+N	≥ 50	≥ 1000	6+6

AGR600G-A



ENG

Fan is equipped with one speed gearbox.





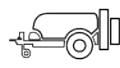

The fan unit can be made from 3 different materials: Galvanized material, coated material or stainless steel material.

ES

El ventilador está equipado con una caja de cambios de una velocidad.

La unidad del ventilador puede estar hecha de 3 materiales diferentes: material galvanizado, material revestido o material de acero inoxidable.

Technical Details

Code	 Size	 Blades	 1+N	 HP	 Lt	 No. of nozzle
AGR600G-A	600mm	8	1+N	≥ 50	≥ 1000	4+4

AGR550G-A



ENG

The propeller can be equipped with or without clutch.





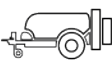

The fan unit can be made from 3 different materials: Galvanized material, coated material or stainless steel material.

ES

La hélice puede estar equipada con o sin embrague.

La unidad del ventilador puede estar hecha de 3 materiales diferentes: material galvanizado, material revestido o material de acero inoxidable.

Technical Details

Code	 Size	 Blades		 HP	 Lt	 No. of nozzle
AGR550G-A	550mm	8	1+N	≥ 50	≥ 1000	4+4

AGR900ST



ENG

The propeller can be equipped with or without clutch.

Fan height is 120 cm.

The fan unit can be made from 3 different materials: Galvanized material, coated material or stainless steel material.



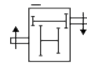

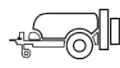

ES

La hélice puede estar equipada con o sin embrague.

La altura del ventilador es de 120 cm.

La unidad del ventilador puede estar hecha de 3 materiales diferentes: material galvanizado, material revestido o material de acero inoxidable.

Technical Details

Code	 Size	 Blades		 HP	 Lt	 No. of nozzle
AGR900ST	900mm	10	2+N	≥ 50	≥ 1000	8+8

AGR900B



ENG

The propeller can be equipped with or without clutch.

Fan height is 130 cm with adjustable wings.

The fan unit can be made from 3 different materials: Galvanized material, coated material or stainless steel material.



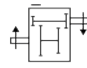

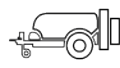

ES

La hélice puede estar equipada con o sin embrague.

La altura del ventilador es de 130 cm con alas ajustables.

La unidad del ventilador puede estar hecha de 3 materiales diferentes: material galvanizado, material revestido o material de acero inoxidable.

Technical Details

Code	 Size	 Blades		 HP	 Lt	 No. of nozzle
AGR900B	900mm	10	2+N	≥ 50	≥ 1000	8+8

AGR900B-W



ENG

The propeller can be equipped with or without clutch.

Fan height is 160 cm with adjustable wings.

The fan unit can be made from 3 different materials: Galvanized material, coated material or stainless steel material.



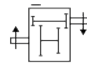

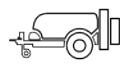

ES

La hélice puede estar equipada con o sin embrague.

La altura del ventilador es de 160 cm con alas ajustables.

La unidad del ventilador puede estar hecha de 3 materiales diferentes: material galvanizado, material revestido o material de acero inoxidable.

Technical Details

Code	 Size	 Blades		 HP	 Lt	 No. of nozzle
AGR900B-W	900mm	10	2+N	≥ 50	≥ 1600	9+9

AGR900T



ENG

The propeller can be equipped with or without clutch.

V type fan with height 190 cm.

The fan unit can be made from 3 different materials: Galvanized material, coated material or stainless steel material.



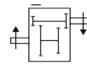

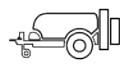

ES

La hélice puede estar equipada con o sin embrague.

Ventilador tipo V con altura 190 cm.

La unidad del ventilador puede estar hecha de 3 materiales diferentes: material galvanizado, material revestido o material de acero inoxidable.

Technical Details

Code	 Size	 Blades		 HP	 Lt	 No. of nozzle
AGR900T	900mm	10	2+N	≥ 50	≥ 1200	9+9

AGR900T-1



ENG

The propeller can be equipped with or without clutch.

Tower fan with height 230 cm.

The fan unit can be made from 3 different materials: Galvanized material, coated material or stainless steel material.



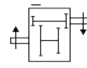

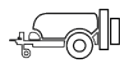

ES

La hélice puede estar equipada con o sin embrague.

Ventilador de torre con altura 230 cm.

La unidad del ventilador puede estar hecha de 3 materiales diferentes: material galvanizado, material revestido o material de acero inoxidable.

Technical Details

Code	 Size	 Blades		 HP	 Lt	 No. of nozzle
AGR900T-1	900mm	10	2+N	≥ 50	≥ 1200	9+9

AGR900V



ENG

The propeller can be equipped with or without clutch.

Orchard fan with height 150 cm.

The fan unit can be made from 3 different materials: Galvanized material, coated material or stainless steel material.



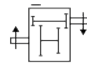

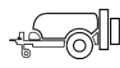

ES

La hélice puede estar equipada con o sin embrague.

Ventilador de huerto con altura 150 cm.

La unidad del ventilador puede estar hecha de 3 materiales diferentes: material galvanizado, material revestido o material de acero inoxidable.

Technical Details

Code	 Size	 Blades		 HP	 Lt	 No. of nozzle
AGR900V	900mm	10	2+N	≥ 50	≥ 1000	9+9

AGR900LT-2



ENG

The propeller can be equipped with or without clutch.

Double tower fan, upper fan 750 mm while lower fan is 850 mm connected by belt system.

Fan height 280 cm.

The fan unit can be made from 3 different materials: Galvanized material, coated material or stainless steel material.

ES



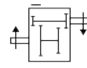

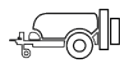

La hélice puede estar equipada con o sin embrague.

Ventilador de doble torre, ventilador superior de 750 mm mientras que el ventilador inferior es de 850 mm conectados mediante sistema de correa.

Altura del ventilador 280 cm.

La unidad del ventilador puede estar hecha de 3 materiales diferentes: material galvanizado, material revestido o material de acero inoxidable.

Technical Details

Code	 Size	 Blades		 HP	 Lt	 No. of nozzle
AGR900LT-2	900mm	10	2+N	≥ 50	≥ 1600	10+10

AGR500RH



ENG

Short cannon fan equipped with single radial turbine.

Hydraulic movement up to 90°.

Flow up to 35 meters.



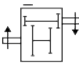


ES

Ventilador de cañón corto equipado con una turbina radial simple.

Movimiento hidráulico de hasta 90° rpm.

Caudal de hasta 35 metros.

Technical Details

Code	 Size	 Radial	 HP	 Lt	 No. of nozzle	
AGR500RH	500mm	Radial	2+N	≥ 50	≥ 1000	13

AGR500RS



ENG

Long cannon fan equipped with single radial turbine.

Hydraulic movement up to 90°.

Flow up to 35 meters.



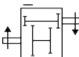


ES

Ventilador de cañón largo equipado con una turbina radial simple.

Movimiento hidráulico de hasta 90° rpm.

Caudal de hasta 35 metros.

Technical Details

Code	 Size	 Radial	 HP	 Lt	 No. of nozzle	
AGR500RS	500mm	Radial	2+N	≥ 50	≥ 1000	13

AGR500RS-D



ENG

Long double radial cannon fan.

Fan height up to 1.8 m, can blow up to 35 meters.

Equipped with double gearbox both clockwise and anti clockwise.



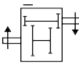

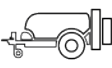

ES

Ventilador radial de cañón doble y largo.

Altura del ventilador: hasta 1,8 m, alcance de soplado: hasta 35 metros.

Equipado con doble caja de cambios, tanto en sentido horario como antihorario.

Technical Details

Code	 Size	 Radial	 2+N	 HP	 Lt	 No. of nozzle
AGR500RS-D	500mm	Radial	2+N	≥ 50	≥ 1600	11+11

AGR400S



ENG

Long cannon fan equipped with double radial turbine.

Hydraulic movement up to 90°.

Flow up to 40 meters.



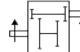



ES

Ventilador de cañón largo equipado con turbina radial doble.

Movimiento hidráulico de hasta 90° rpm.

Caudal de hasta 40 metros.

Technical Details

Code	 Size	 Radial	 HP	 HP	 Lt	 No. of nozzle
AGR400S	400mm	Radial	2+N	≥ 50	≥ 1200	11

AGR400RH



ENG

Long cannon fan equipped with double radial turbine.

Hydraulic movement left and right 200°, up and down 90°.

Flow up to 40 meters.



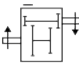



ES

Ventilador de cañón largo equipado con turbina radial doble.

Movimiento hidráulico de 200° rpm a izquierda y derecha, 90° arriba y abajo.

Caudal de hasta 40 metros.

Technical Details

Code	 Size			 HP	 Lt	 No. of nozzle
AGR400RH	400mm	Radial	2+N	≥ 50	≥ 1600	11

FAN SPARE PARTS

REPUESTOS PARA VENTILADORES

PL35AL



Aluminium hub.
Carbon alloy plastic propeller.
750 mm - 900 mm.

Number of blades	
8 pcs	10 pcs

PL36AL



Aluminium hub.
Carbon alloy plastic propeller.
750 mm - 900 mm.

Number of blades	
8 pcs	10 pcs

8PP18



Plastic propeller.
750 mm - 850 mm.

Number of blades	
8 pcs	10 pcs

8PL20AL



Aluminium hub.
Carbon alloy plastic propeller.
550 mm - 600 mm.

Number of blades	
8 pcs	

ST036



Static propeller.
750 mm - 900 mm.

400R



Radial turbine with clutch.

N01



G 1/4" or G 3/8"

N02



G 1/4" or G 3/8"

SS



SS0035	5+5	G 1/4" or G 3/8"
SS0036	6+6	
SS0037	7+7	
SS0038	8+8	

AL



AL0035	5+5	G 1/4" or G 3/8"
AL0036	6+6	
AL0037	7+7	
AL0038	8+8	

L2001



L2001-V



M1001



M1001-V



SPRAY GUN

PISTOLAS

AG1000101A



Aluminium nozzle

AG1000101S



Ceramic nozzle

AG1000105TK



Aluminium nozzle

AG1000105TU



Aluminium nozzle

AG1000107TH



Ceramic nozzle

AG1000107TT



Ceramic nozzle

AG1000108UTA



Aluminium nozzle

AG1000108UTS



Ceramic nozzle

AG1000110UTH



Ceramic nozzle

AG1000110UTT



Ceramic nozzle

AG1000113YT



T-Jet nozzle

Notes

Date:/...../.....

A series of horizontal dotted lines for writing notes.

Notes

Date:/...../.....

A series of horizontal dotted lines for writing notes.

agRima

POWER • SPEED • CONTROL



+90 236 233 11 50

info@agrimasprayer.com

Muradiye Mahallesi 24. Sokak No: 2
Sanatkarlar Koop. Sitesi Yunusemre / MANİSA

f @ X in ▶

Follow us on social media!

www.agrimasprayer.com